



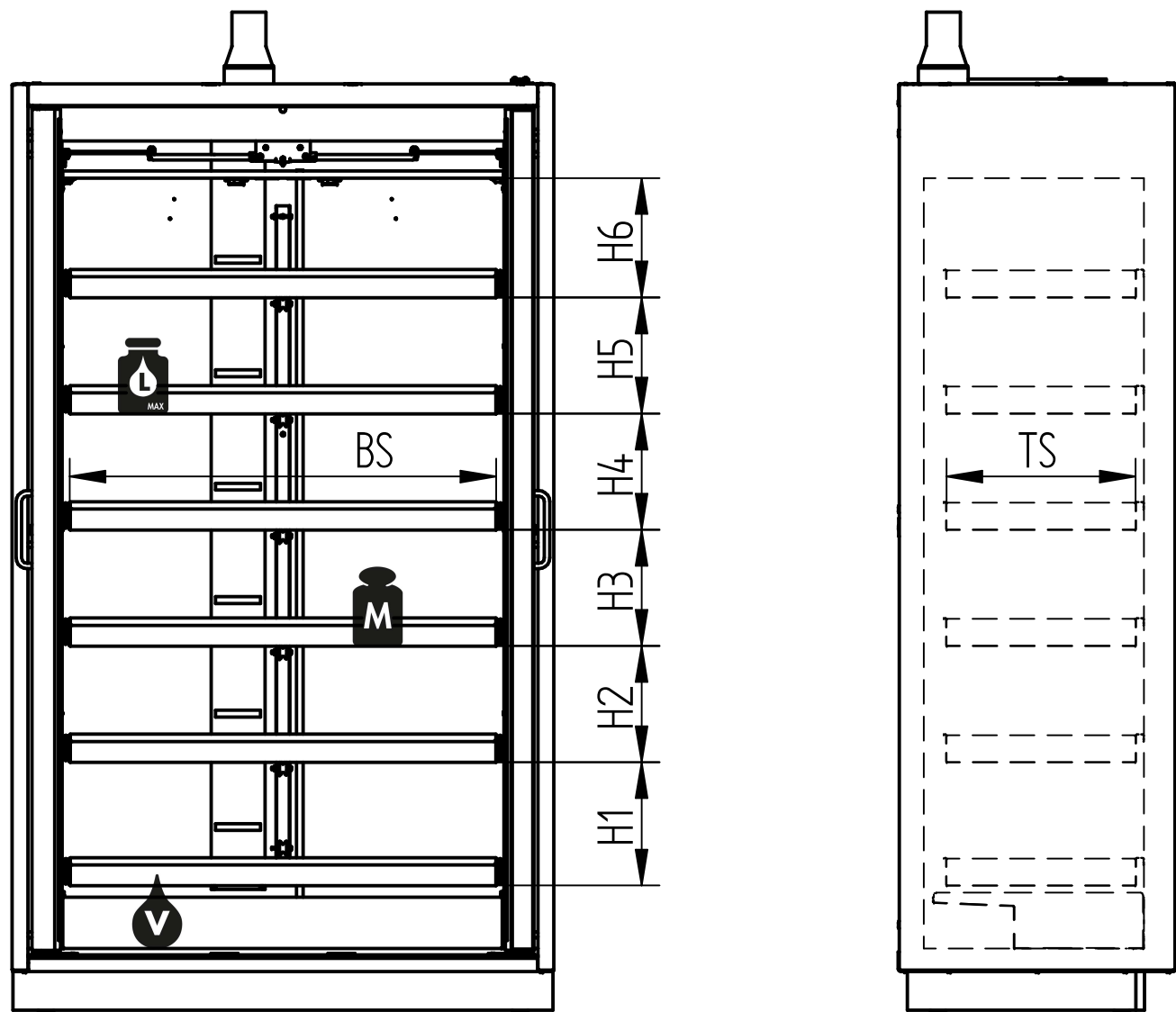
	Model type						
	M	ML	L	LL	XL	XL (CPW)	XXL
H (mm)	2045	2045	2045	2045	2045	2045	2045
B (mm)	594	594	894	894	1194	1194	1654
T (mm)	612	747	612	747	612	612	747
T1 (mm)	1100	1235	990	1125	1140	1140	1483
Doors	1	1	2	2	2	2	2
Tare weight (kg)*	293-305	330-345	378-395	425-442	470-488	483-512	835-870
Inside cabinet volume (m ³)	0,43	0,55	0,69	0,89	0,95	0,95	2x 0,83

* varies according to the number of pull-out shelves

CPW: Centre partition wall

Outer dimensions

This drawing is our property! Furnish this information to other persons and reproduce or copy is not permitted without our written permission.	title: CLASSIC pro Type 90, safety cabinet with wing door(s)		
	drawing no: 000106830	page: 1 of 4	
Düperthal Sicherheitstechnik Frankenstrasse 3 D-63791 Karlstein	revision: 01	date: 2020-07-02	



	Model type						
	M	ML	L	LL	XL	XL (CPW)	XXL
BS (mm)	340	340	640	640	940	2x 442	2x 588
TS (mm)	417	552	417	552	417	417	552
M (kg)	40	40	60	60	60	40	60
Max. additional load (kg)	240	240	360	360	360	360	2x 360
L (l)	10	15	20	25	30	10	25
V (l)	11	16,5	22	27,5	33	11	27,5

BS: Width storage area
 TS: Depth storage area
 M: Load bearing capacity per pull-out shelf (uniformly distributed)
 L: Max. volume of the individual container

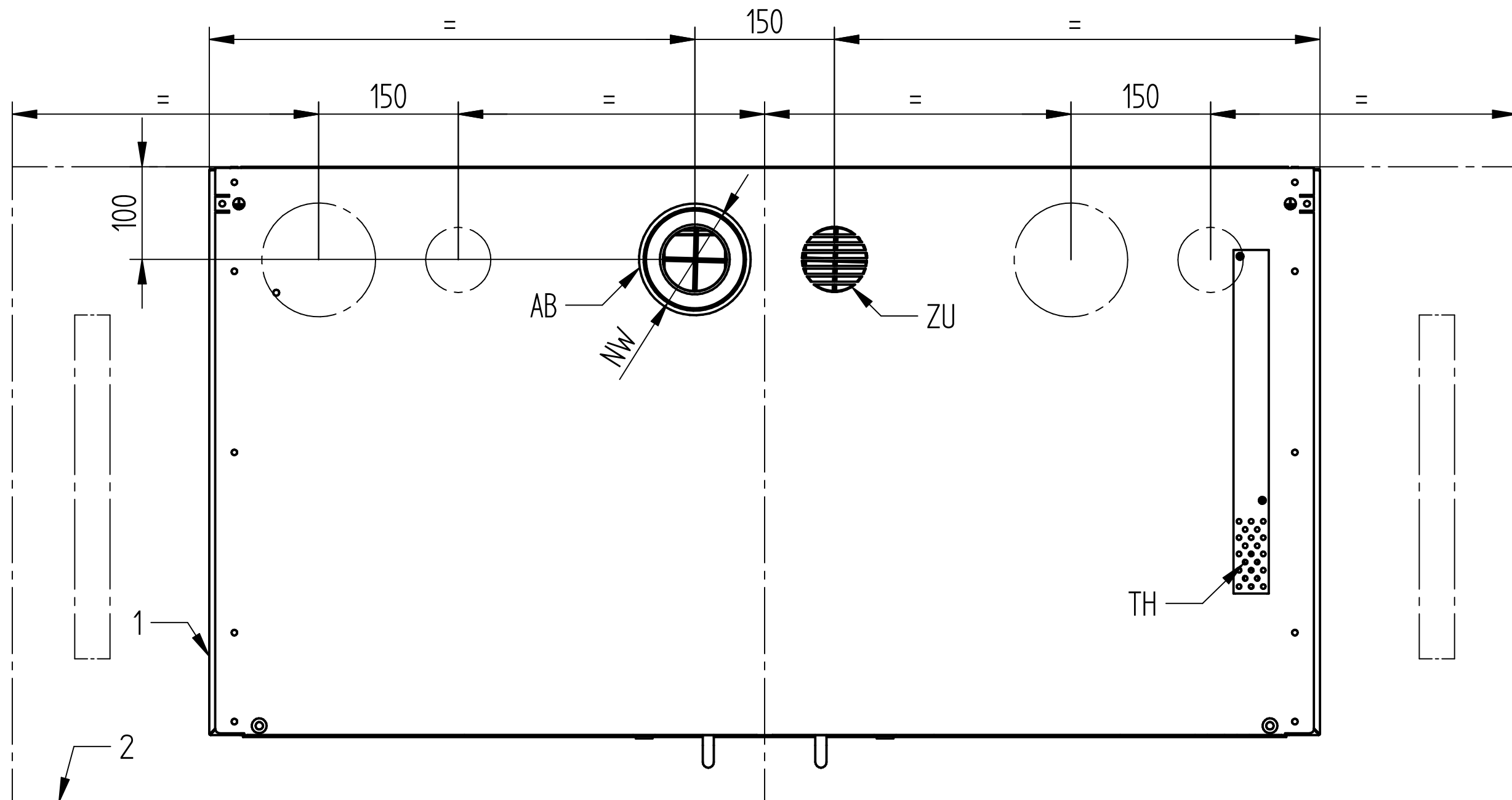
V: Max. collection volume
 CPW: Centre partition wall

		Max. setting heights (mm)	
		Model type	
		M, ML, L, LL, XL, XXL	
3 pull-out shelves	H1	527	
	H2	527	
	H6	502	
4 pull-out shelves	H1	399	
	H2	399	
	H3	383	
	H6	374	
5 pull-out shelves	H1	319	
	H2	319	
	H3	319	
	H4	303	
	H6	294	
6 pull-out shelves	H1	271	
	H2	255	
	H3	255	
	H4	255	
	H5	255	
	H6	262	

Pull-out shelves adjustable in 16mm pitch ex work on request.



Inner dimensions

This drawing is our property! Furnish this information to other persons and reproduce or copy is not permitted without our written permission.	title: CLASSIC pro Type 90, safety cabinet with wing door(s)		
	drawing no: 000106830	page: 2 of 4	
Düperthal Sicherheitstechnik Frankenstrasse 3 D-63791 Karlstein	revision: 01	date: 2020-07-02	

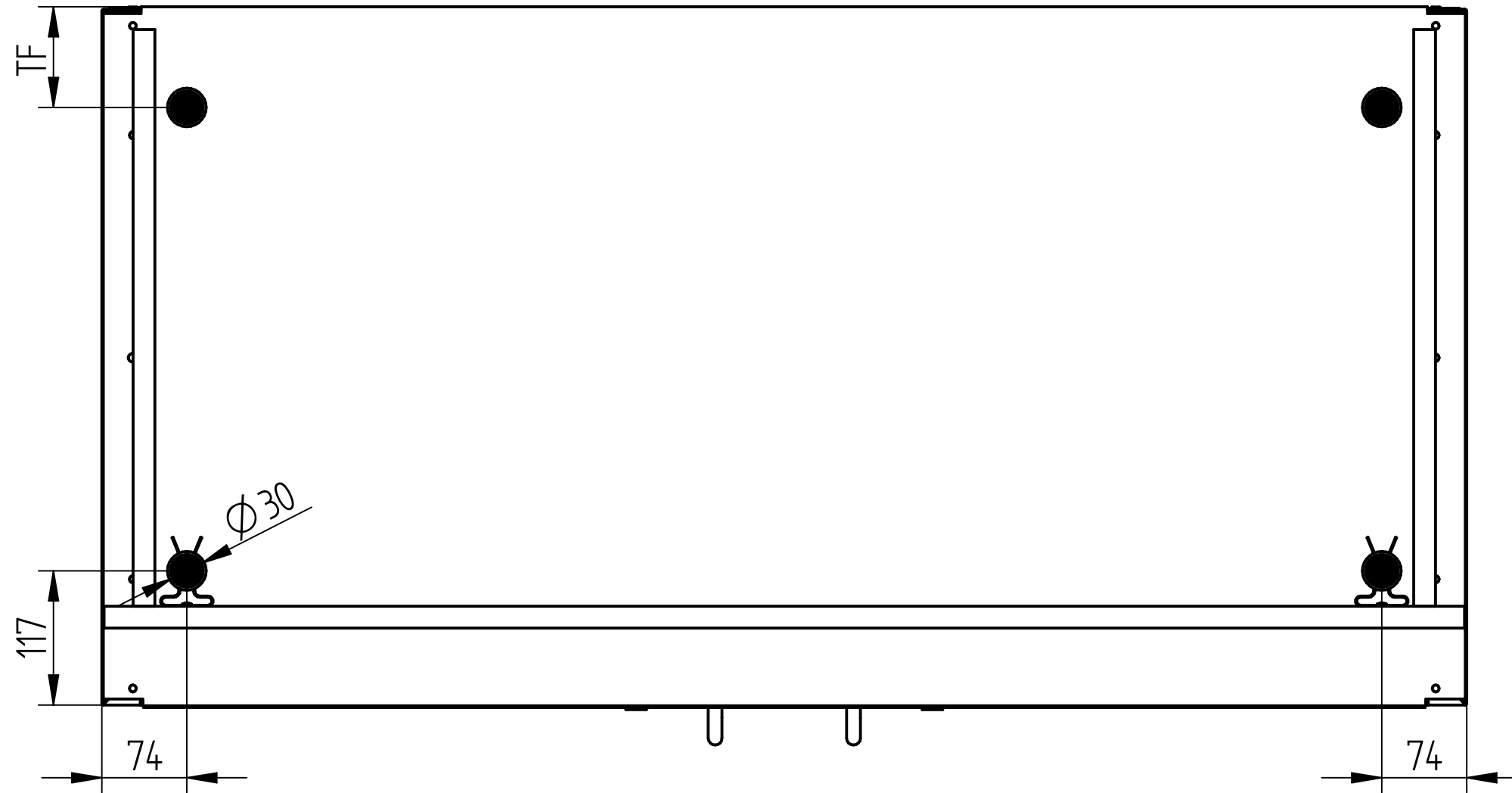


- 1: Model type M-XL
- 2: Model type XXL
- NW: 110, with adapter 75
- AB: Exhaust air connection
- ZU: Supply air
- TH: Thermocouple

Ventilation connection


This drawing is our property! Furnish this information to other persons and reproduce or copy is not permitted without our written permission.	title: CLASSIC pro Type 90, safety cabinet with wing door(s)		
	drawing no.: 000106830	page: 3 of 4	
Düperthal Sicherheitstechnik Frankenstrasse 3 D-63791 Karlstein	revision: 01	date: 2020-07-02	

	Model type	
	ML, LL, XXL	M, L, XL, XL(CPW)
TF (mm)	83	88



● Loaded footprint

Geometry of the adjustable feet

This drawing is our property! Furnish this information to other persons and reproduce or copy is not permitted without our written permission.	title: CLASSIC pro Type 90, safety cabinet with wing door(s)		
	drawing no.: 000106830	page: 4 of 4	
Düperthal Sicherheitstechnik Frankenstrasse 3 D-63791 Karlstein	revision: 01	date: 2020-07-02	