

	Model type							
	S	SL	M	ML	L	LL	XS	XL
B (mm)	594	594	594	594	894	894	1194	1194
T (mm)	609	744	609	744	609	744	609	609
H (mm)	30	30	30	30	30	30	30	30
Weight (kg)	4,6	5,6	4,6	5,6	6,8	8,4	9,3	9,3
M (kg)	50	50	50	50	100	100	100	100
M1 (kg)	25	25	25	25	48	48	48	48
Max. additional load of the safety cabinet (kg)	240	240	360	360	360	360	240	360
RL1 (mm)	-	-	-	-	110	110	135	135
RL2 (mm)	-	-	-	-	110	110	95	95
RR1 (mm)	190	190	190	190	110	110	135	135
RR2 (mm)	97	97	97	97	112	112	112	112

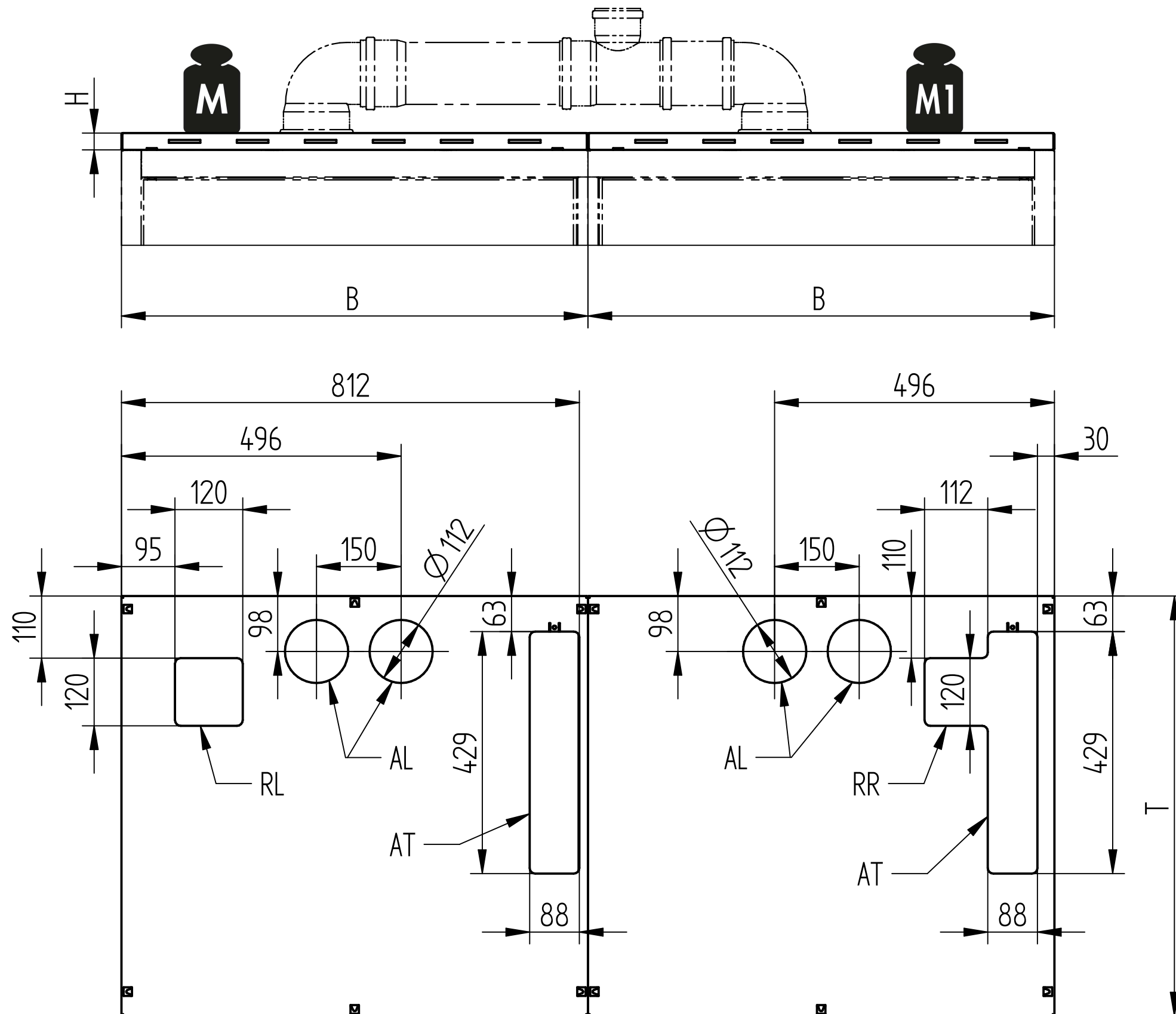
- M: Max. load-bearing capacity of the load adapter (uniformly distributed)
- M1: Max. proportion of loading of non-flammable elements
- AL: Cut-outs for supply air and exhaust air
- RL: Cut-out for pipe penetration left
- RR: Cut-out for pipe penetration right
- AT: Cut-out for thermocouple

NOTE:
The max. additional load of the safety cabinet is reduced by the loading of the load adapter.

Model type S - XL

This drawing is our property! Furnish this information to other persons and reproduce or copy is not permitted without our written permission.	title: Load adapter		
	drawing no: D00110862	page: 1 of 2	
Düperthal Sicherheitstechnik Frankenstrasse 3 D-63791 Karlstein	revision: 00	date: 2021-03-15	


	Model type
	XXL
B (mm)	2x 827
T (mm)	744
H (mm)	30
Weight (kg)	2x 7,9
M (kg)	2x 100
M1 (kg)	2x 48
Max. additional load of the safety cabinet (kg)	2x 360



- M: Max. load-bearing capacity of the load adapter (uniformly distributed)
- M1: Max. proportion of loading of non-flammable elements
- AL: Cut-outs for supply air and exhaust air
- RL: Cut-out for pipe penetration left
- RR: Cut-out for pipe penetration right
- AT: Cut-outs for thermocouple

NOTE:
The max. additional load of the safety cabinet is reduced by the loading of the load adapter.

Model type XXL

This drawing is our property! Furnish this information to other persons and reproduce or copy is not permitted without our written permission.	title: Load adapter		
	drawing no: 000110862	page: 2 of 2	
Düperthal Sicherheitstechnik Frankenstrasse 3 D-63791 Karlstein	revision: 00	date: 2021-03-15	