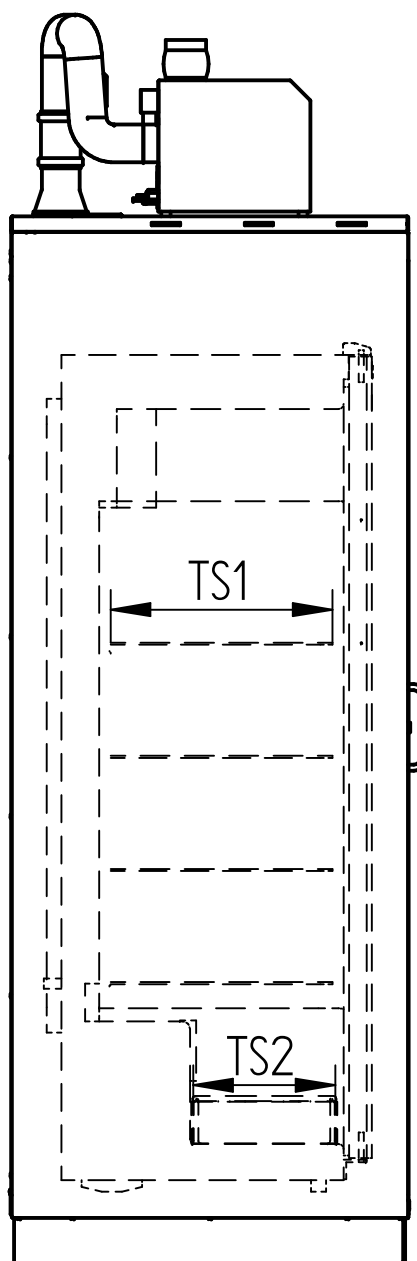
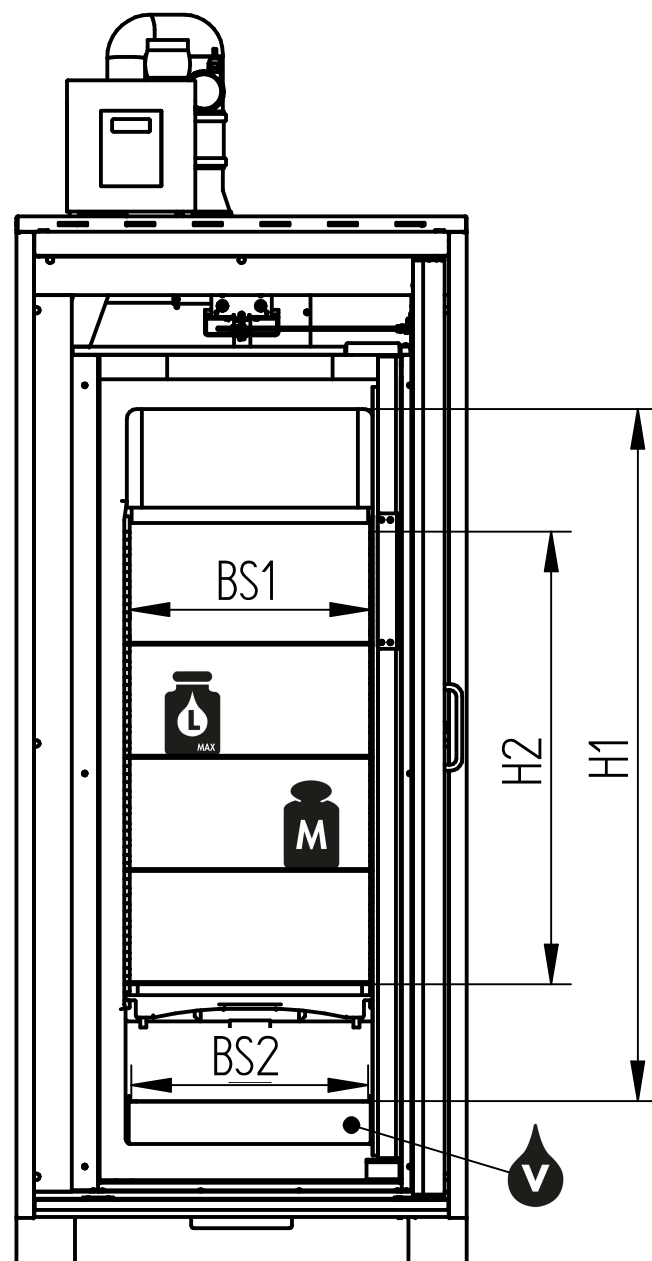


	Model type
	COOL standard LL
H (mm)	2050
B (mm)	894
T (mm)	791
T1 (mm)	1579
Doors	1
Empty weight (kg)	485

AU / AUV: Exhaust air monitoring unit,  
see page 3

## Exterior

This drawing is our property! Furnish this information to other persons and reproduce or copy is not permitted without our written permission.	title: COOL standard LL Type 90, safety cabinet with wing door		
	drawing no: 000130909	page: 1 of 4	
Düperthal Sicherheitstechnik Frankenstrasse 3 D-63791 Karlstein	revision: 00	date: 2024-12-18	






Refrigerator data	Model type
	COOL standard LL
Cooling area volume (m³)	0,261
Refrigerant	R600a
Temperature range (°C)	+3 to +16
Climate category	7
Connection voltage (V)	220 - 240
Frequency (Hz)	50
Power consumption (W)	120

	Model type
	COOL standard LL
H1 (mm)	1373
H2 (mm)	896
BS1 (mm)	477
BS2 (mm)	470
TS1 (mm)	440
TS2 (mm)	282
M (kg)	40
L (l)	10
V (l)	11
Number of glass shelves	4
Number of shelves	1
Max. payload of refrigerator (kg)	180
Max. payload of extra load adapter (kg)	20*
Max. total weight (kg)	685

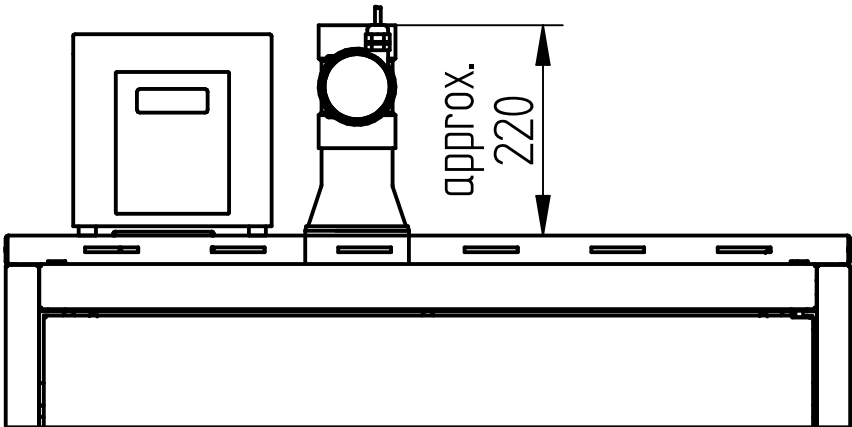
\* The weight of the exhaust air monitoring must be taken into account.

- H1: Adjustable height above the shelf  
H2: Adjustment range for glass shelves - adjustable in a 32mm grid  
BS1: Glass shelf standing surface width  
BS2: Shelf standing surface width  
TS1: Glass shelf standing surface depth  
TS2: Shelf standing surface depth  
M: Load-bearing capacity per standing surface (uniformly distributed)  
L: Max. volume of largest individual container  
V: Max. collection volume

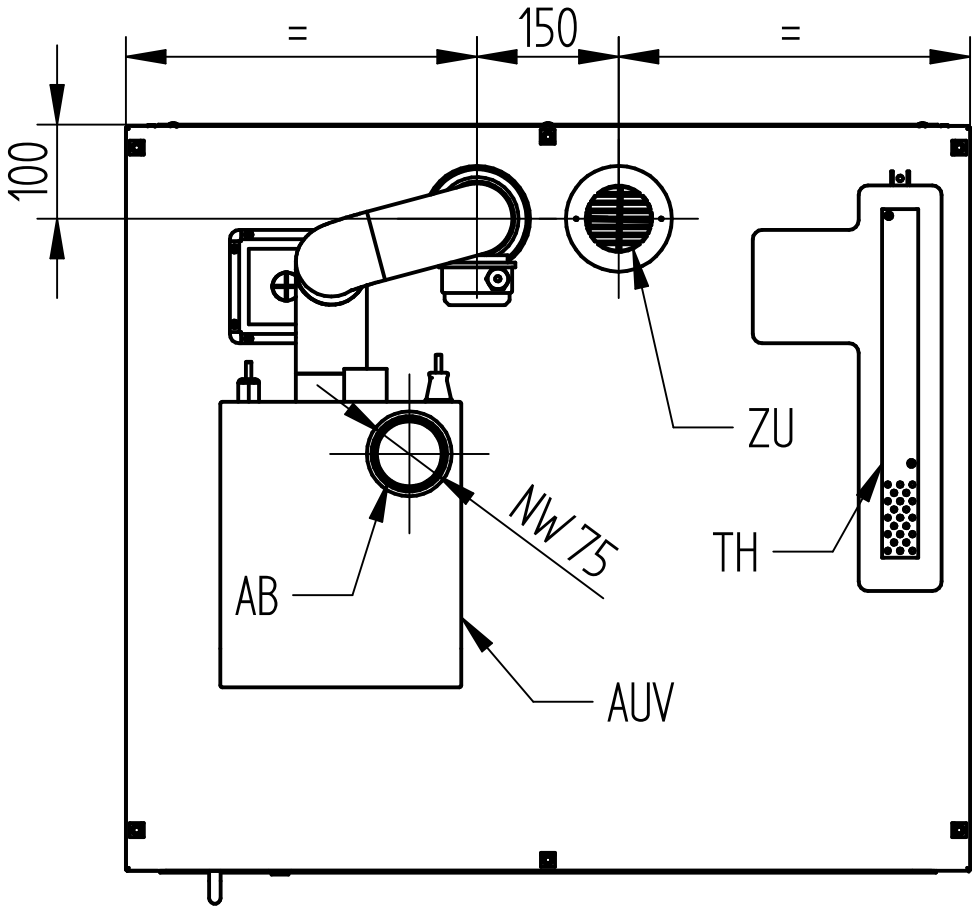
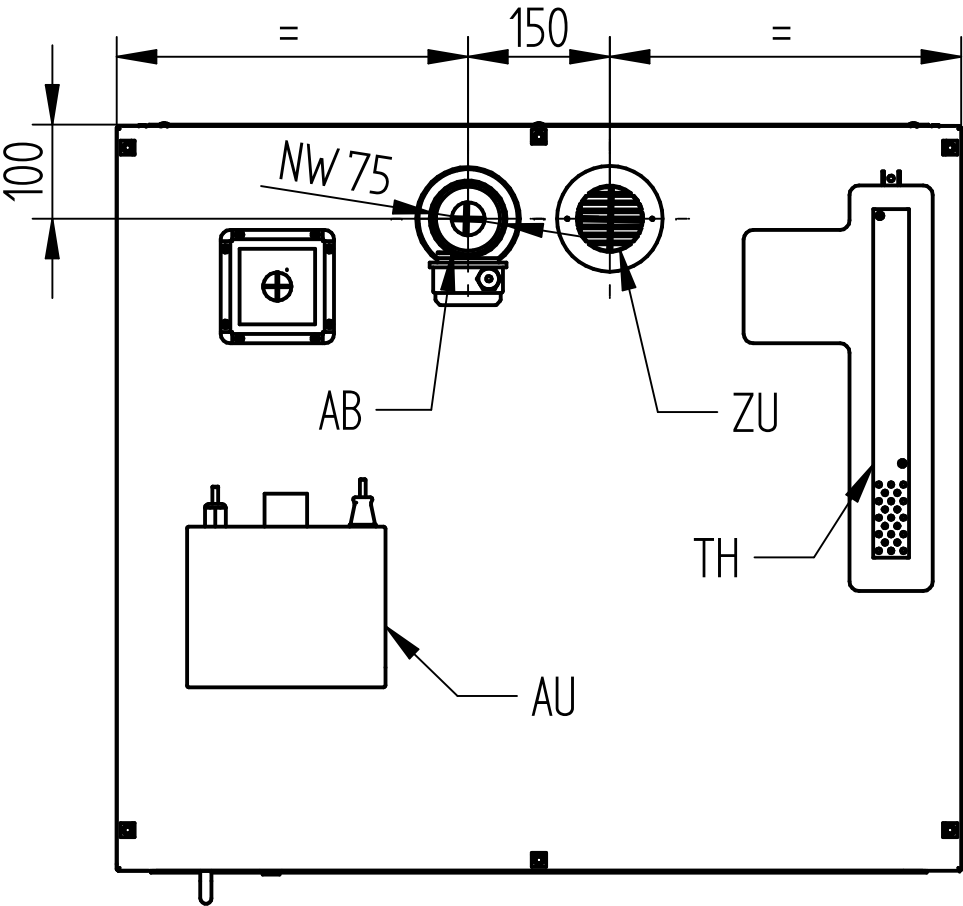
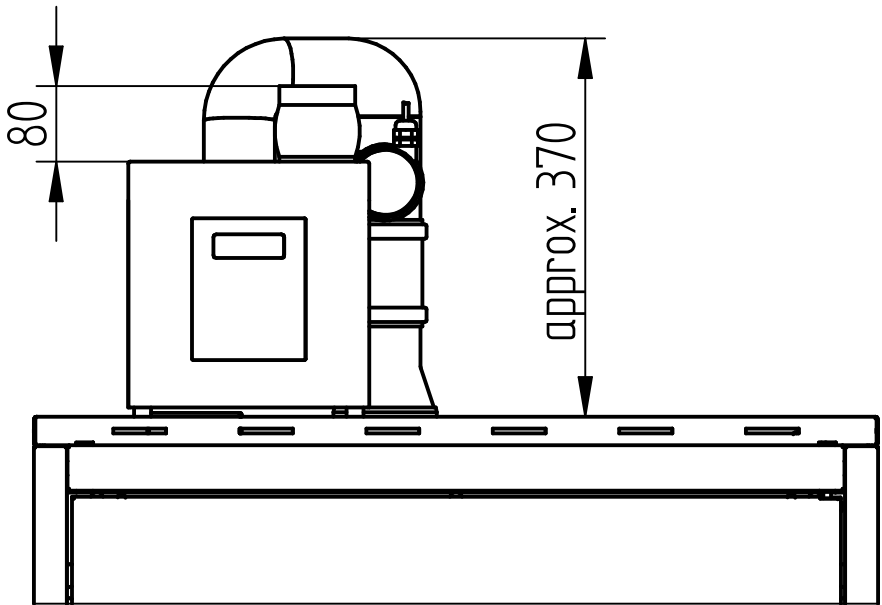
## Interior

This drawing is our property! Furnish this information to other persons and reproduce or copy is not permitted without our written permission.	title: COOL standard LL Type 90, safety cabinet with wing door		 
	drawing no: 000130909	page: 2 of 4	
Düperthal Sicherheitstechnik Frankenstrasse 3 D-63791 Karlstein	revision: 00	date: 2024-12-18	

Ventilation connection with AU



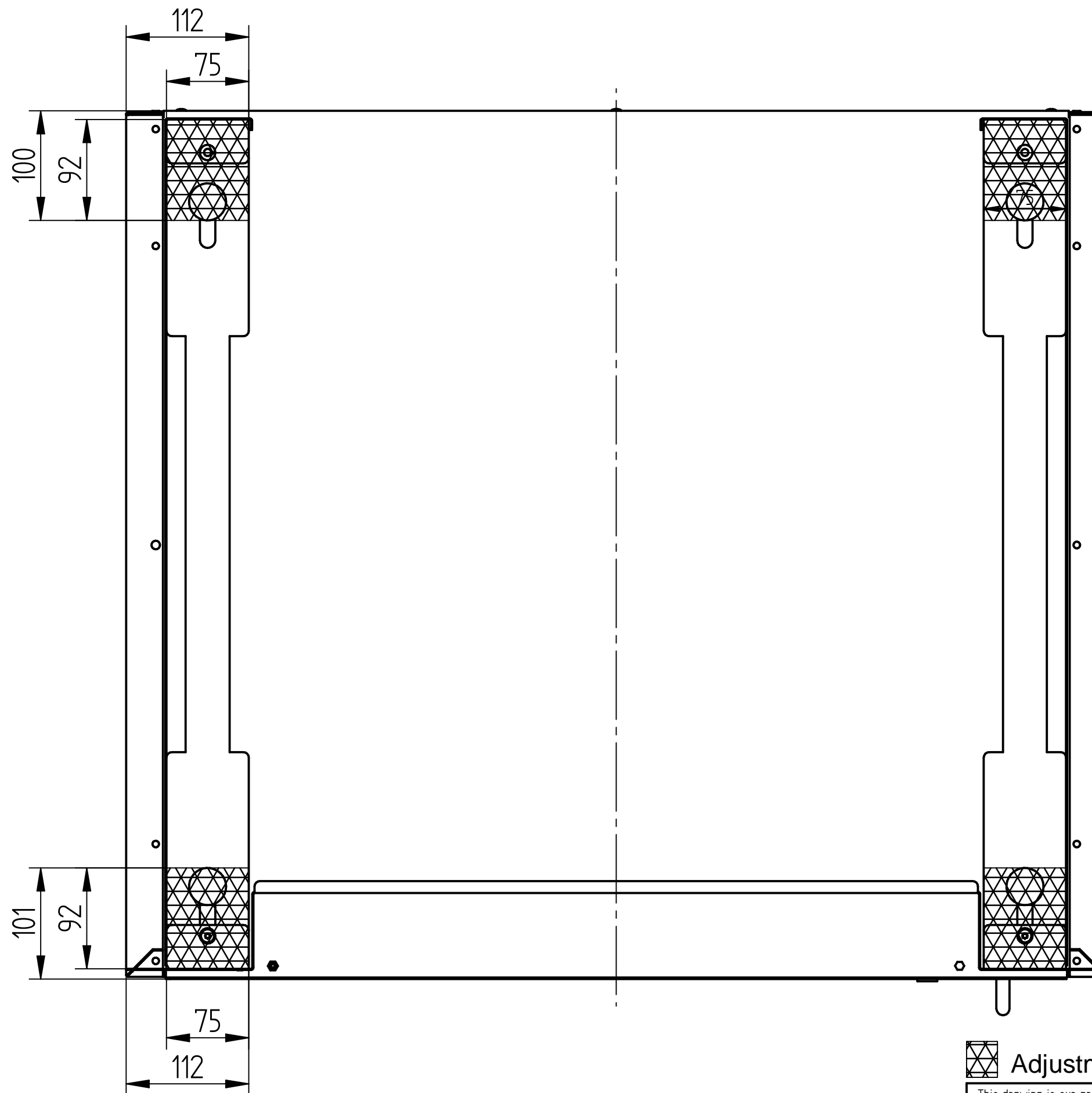
Ventilation connection with AUV



- AB: Exhaust air connection  
ZU: Supply air  
TH: Thermocouple  
AU: Exhaust air monitoring unit  
210 x 210 x 215 (W x D x H)  
Sensor cable length approx. 1m  
Supply voltage 230V / frequency 50Hz  
Power supply cable length approx. 1,8m  
Plug type E+F, CEE 7/7  
AUV: Exhaust air monitoring unit with ventilator  
255 x 310 x 275 (W x D x H)  
Exhaust hose length approx. 1m  
Sensor cable length approx. 1m  
Supply voltage 230V / frequency 50Hz  
Power supply cable length approx. 1,8m  
Plug type E+F, CEE 7/7

Ventilation connection

This drawing is our property! Furnish this information to other persons and reproduce or copy is not permitted without our written permission.	title: COOL standard LL Type 90, safety cabinet with wing door		
	drawing no.: D00130909	page: 3 of 4	
Düperthal Sicherheitstechnik Frankenstrasse 3 D-63791 Karlstein	revision: 00	date: 2024-12-18	



Adjustment range of the stand skids and feet

This drawing is our property!  
Furnish this information to other  
persons and reproduce or copy is  
not permitted without our  
written permission.

title: COOL standard LL  
Type 90, safety cabinet with wing door

drawing no.: 000130909

page: 4 of 4

revision: 00

date: 2024-12-18

Düperthal Sicherheitstechnik  
Frankenstrasse 3  
D-63791 Karlstein

 **DÜPERTHAL**